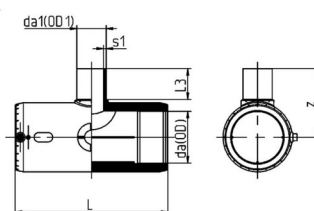


PE100-RC Elektro T-Rør med redusert utløp

TRELE-A

- Maks trykk vann PN16 / Gass PN10 (iht sikkerhetsfaktor 1,25)
- T-rørets reduserte avstikk/utløp er uten elektromuffe
- For detaljert SDR kompatibilitet, se nedenfor



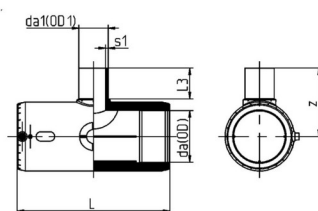
Artikkelnr	NRF	da(OD)	da1(OD1)	SDR	L	L3	s1	Z
TRELE-RC-025-020	2453216	25	20	11	110.5	42.5	3	66
TRELE-RC-032-020	1576412	32	20	11	122.5	42.5	3	70
TRELE-RC-032-025	1576413	32	25	17-11	122.5	42.5	3	70
TRELE-RC-040-020	1576414	40	20	11	138	42.5	3	77
TRELE-RC-040-025	1576410	40	25	17-11	138	42.5	3	77
TRELE-RC-040-032	1576411	40	32	11	138	47	3	82
TRELE-RC-050-020	2453217	50	20.0	11	160	42.5	3	82
TRELE-RC-050-025	2453218	50	25.0	11	160	42.5	3	82
TRELE-RC-050-032	2453219	50	32.0	11	160	47.0	3	87
TRELE-RC-050-040	2453221	50	40.0	11	160	50.5	3.7	92
TRELE-RC-063-020	2453222	63	20.0	17-11	185.5	42.5	3	91.5
TRELE-RC-063-032	2453224	63	32.0	17-11	185.5	47.0	3	96.5
TRELE-RC-063-040	2453225	63	40.0	17-11	185.5	50.5	3.7	99.5
TRELE-RC-063-025	2453223	63	25.0	17-11	185.5	42.5	3	91.5
TRELE-RC-063-050	2453226	63	50.0	17-11	185.5	58.0	4.6	110
TRELE-RC-075-050	2453227	75	50.0	17-11	209	58.0	4.6	116
TRELE-RC-075-063	2453228	75	63.0	17-11	209	66.0	5.8	122.5
TRELE-RC-090-050	2453229	90	50.0	17-11	291.5	58.0	4.6	127
TRELE-RC-090-063	2453231	90	63.0	17-11	291.5	66.0	5.8	135
TRELE-RC-110-063	2453232	110	63.0	17-11	326.5	66.0	5.8	148.5
TRELE-RC-110-090	2453233	110	90.0	17-11	326.5	91.0	8.2	181
TRELE-RC-125-063	2453234	125	63.0	17-11	347.5	66.0	5.8	157
TRELE-RC-125-090	2453235	125	90.0	17-11	347.5	91.0	8.2	192

Med forbehold om konstruksjonsendringer og tekniske endringer. Kan endres uten varsel.

gpa.no | info@gpa.no | +47 64 85 68 00

PE100-RC Elektro T-Rør med redusert utløp

TRELE-A



Artikkelnr	NRF	da(OD)	da1(OD1)	SDR	L	L3	s1	Z
TRELE-RC-125-110	2453236	125	110.0	17-11	347.5	101.0	10	202
TRELE-RC-160-063	2453237	160	63.0	17-11	370.5	66	5.8	180
TRELE-RC-160-090	2453238	160	90.0	17-11	370.5	91.0	8.2	214
TRELE-RC-160-110	2453239	160	110.0	17-11	370.5	101.0	10	224
TRELE-RC-160-125	2453241	160	125.0	17-11	370.5	111.0	11.4	233